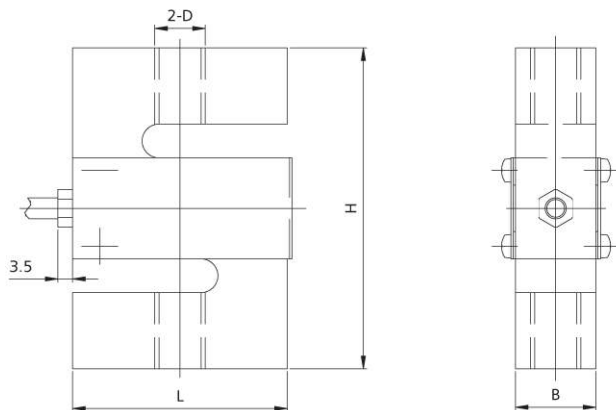




量程(kg)	D	L	H	B
100~500	M12	51	76.2	19.1
1000	M12	51	76.2	25.4
2000~5000	M20x1.5	76.2	100.4	31.8



TECHNICAL PARAMETER | Exc+(红,Red); Exc-(黑,Black); Sig+(绿,Green);Sig-(白,White)

额定载荷 Rated Load	100,200,250,300,500,750,1000,2000,3000,5000kg	工作温度范围Operating Temp Range	-30~+70°C
灵敏度 Sensitivity	2.0±0.003mV/V(DEE);3.0±0.003mV/V(DEF)	安全过载Safe load limit	120%F.S
综合误差 Total error	±0.02%F.S; ±0.03%F.S	极限过载Over load limit	200%F.S
蠕变(30分钟) Creep(30min)	±0.02%F.S	推荐激励电压Recommend excitation	10~12V DC
零点平衡 Zero balance	±1%F.S	最大激励电压Maximum excitation	15V DC
零点温度影响 TCO	±0.02%F.S/10°C	密封等级Protection Class	IP67(100~1000kg),IP68(2000~5000kg)
输出温度影响 TC SPAN	±0.02%F.S/10°C	材质Construction	合金钢Alloy Steel,-s/-ss:不锈钢Stainless Steel
输入阻抗 Input resistance	400 ± 10 Ω	电缆Cable	
输出阻抗 Output resistance	352 ± 2 Ω		Length:5m
绝缘电阻 Insulation resistance	≥5000MΩ		Diameter: φ5mm